



Integration

Generated on: 2021-01-20 04:00:17 GMT+0000

SAP ERP | 6.0 EHP8 SP15

PUBLIC

Original content: <https://help.sap.com/viewer/dbc6182f068b46b7aff92e8a28d9b5d0/6.18.15/en-US>

Warning

This document has been generated from the SAP Help Portal and is an incomplete version of the official SAP product documentation. The information included in custom documentation may not reflect the arrangement of topics in the SAP Help Portal, and may be missing important aspects and/or correlations to other topics. For this reason, it is not for productive use.

For more information, please visit the <https://help.sap.com/viewer/disclaimer>.

Integrating External Billing Systems

Purpose

For exchanging data between **Contract Accounts Receivable and Payable** (FI-CA) and an external (billing) system, in **SAP Exchange Infrastructure** (XI), SAP provides various different message interfaces.

Notes on Implementation

Make sure that the **process integration content** of the software component FI-CA has been imported to your integration repository. The **process integration content** for **Contract Accounts Receivable and Payable** is on SAP Service Marketplace. Here the content is displayed as a patch under the respective industry solution (for example, SAP IS-T).

Features

You configure the link between the message interfaces of the software component FI-CA and external systems in the Integration Directory of your **Integration Server** (see Basics).

For more information about the interfaces and their use, see the following section. You can use the following message interfaces in **Contract Accounts Receivable and Payable** for the connection to external (billing) systems:

Interface of SAP Exchange Infrastructure	Description
FICAExteringBillingNotification_In	Document transfer with revenue item
OpenItemAccountingSummaryNotification_Out	Outbound interface of business partner information
BillImageRequest_Out	External archive connection

The **process integration content** under the software component FI-CA still contains the IDocs `ContractDocument_Create` and `ContractDocument_Reverse` and the BAPI `BAPI_CTRADOCUMENT_GETLIST` as imported objects.

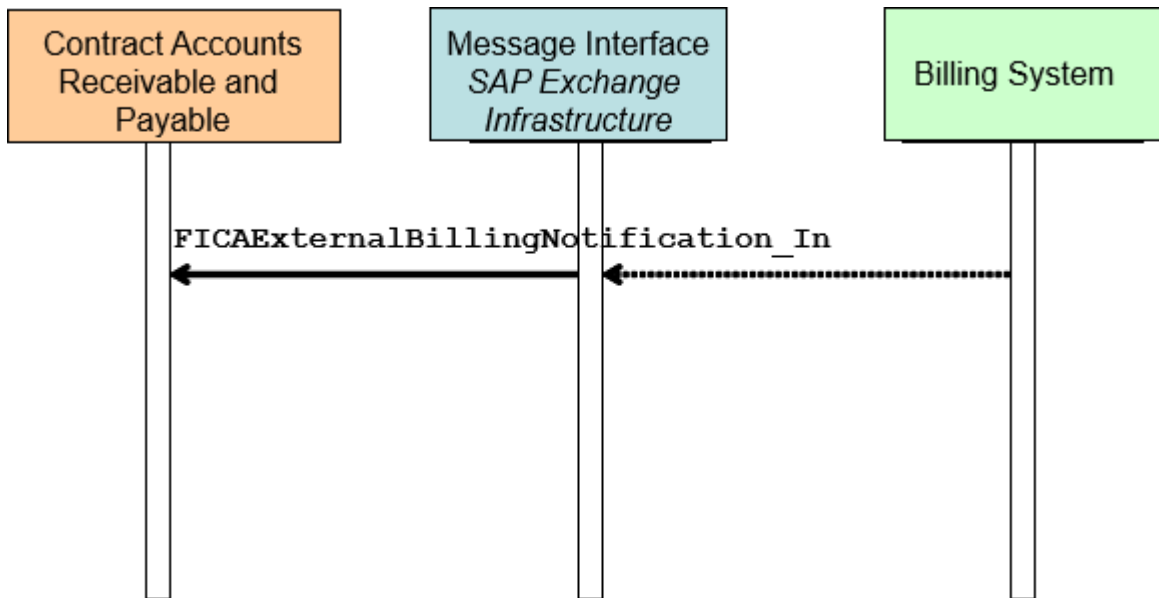
Message Interface for Document Transfer

Definition

Invoices are transferred in the scope of **SAP Exchange Infrastructure** and using an asynchronous message.

Structure

Transferring documents using **SAP Exchange Infrastructure**



You need to link the interface `FICAExternalBillingNotification_In` (FI-CA) with a customer-specific interface (outbound) of the billing system. To avoid mapping (in order to improve performance), you should reuse the message data type `FICAExternalBillingNotification` again in the customer-specific interface.

Configuring Document Transfer

Use

Document transfer with revenue item is based on the interface technology of [SAP Exchange Infrastructure](#) and on IDoc interfaces.

Procedure

To transfer invoices, credit memos, write-offs, or down payment requests using message interfaces and IDoc interfaces, you have to make the following settings:

1. Define Partner Agreements and Port

A message is not transferred directly to the system; instead, it is stored first in an IDoc and then transferred to the system. To process an IDoc, you must first define a port and a partner agreement.

There are no interface-relevant restrictions or notes for the port description (transaction WE21). You can use the port type [File](#), for example. For this port type, the system stores the IDocs in files. You start processing using a synchronous RFC.

For the definition of the partner agreement (transaction WE20), make sure that the partner type is a logical system. The partner number in the control records of the IDocs created by the external billing system must be the same as the partner number in the partner agreement. If the partner numbers are not identical, the system cannot process the IDocs since the ERP system cannot recognize the partner. Since, from the point of view of the ERP system, the IDocs are inbound IDocs, you have to enter the relevant message type in the inbound parameters and configure it according to the following table:

Interface	Message Type	Process Code	Settings
Document transfer	FKK_EBS_DOC	FKK_EBS_DOC	<ul style="list-style-type: none"> o Syntax check o Triggered by background program

1. Define Identification for External System

To enable communication with an external billing system, you first have to define an ID for the external system in Customizing for Contract Accounts Receivable and Payable. Choose [Data Transfer Communication with External Billing Systems](#) and enter the ID.

2. Maintain Basic Settings

So that a message for later posting can be transferred correctly in an IDoc, you have to make basic settings in Customizing for Contract Accounts Receivable and Payable. Choose [Data Transfer Communication with External Billing Systems Transfer of Accounting Documents Basic Settings for Document Transfer . .](#)

If the standard functions do not meet your requirements, in addition to the Customizing settings, you can use the following events to make customer-specific implementations:

- o 2401 Posting via IDoc: Determine Reconciliation Key
- o 2404 Posting via IDoc: Customer Header Segment Processing
- o 2418 Posting via IDOC: Account Assignment of Revenue Items
- o 2419 Posting using IDoc with Revenue Item: BPITEM Segment Processing
- o 2420 Posting using IDoc with Revenue Item: Determine Object Relationships
- o 2421 Posting using IDoc with Revenue Item: GLITEM Segment Processing
- o 2422 Posting using IDoc with Revenue Item: TAXITEM Segment Processing
- o 2423 Posting via IDOC: Addition of COPA Data
- o 2424 Posting with IDoc with Revenue Item: Account Assignment of Business Partner Item
- o 2425 Posting with IDoc with Revenue Item: XI Message Enhancement

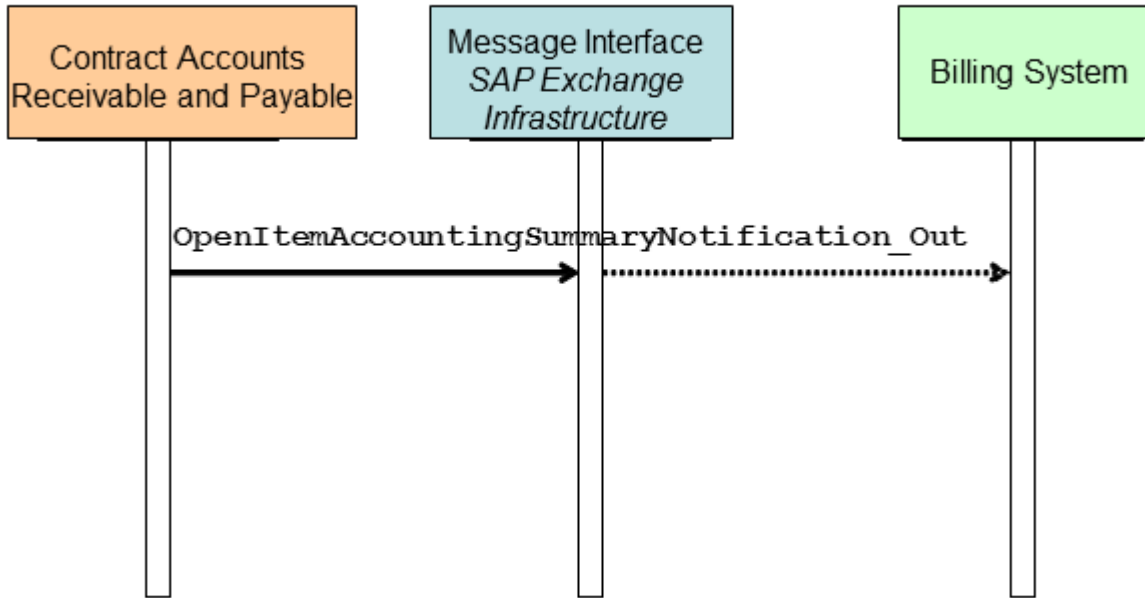
Message Interface for Outbound Interface

Definition

The liability update is made possible by an asynchronous message interface.

Structure

Message Interface for Outbound Interface for Business Partner Information



You have to connect the interface `OpenItemAccountingSummaryNotification_Out` (FI-CA) with a customer-specific interface (inbound) of the billing system. To avoid mapping (in order to improve performance), the message data type `OpenItemAccountingSummaryNotification` should be reused in the customer-specific interface.

In Customizing you can activate the transfer of business partner data to the outbound interface per company code and receiver system for open items, cleared items, and payments.

With a customer-specific implementation of the following events, if the functions described here do not meet your requirements, you can influence the transfer of data to external systems:

- 3800 Outbound Interface: Filter and Receiver Determination
- 3806 Outbound Interface: Interface Call (Message Interface)
- 3808 Outbound Interface: Supplement Interface
- 3810 Outbound Interface: Selection Specifications for Open Items
- 3820 Outbound Interface: Determination of External Contract Number
- 3830 Outbound Interface: Filter Information (Transfer)

For more information, see [Outbound Interface for Postings to Business Partner](#) under **Interfaces in Contract Accounts Receivable and Payable**.

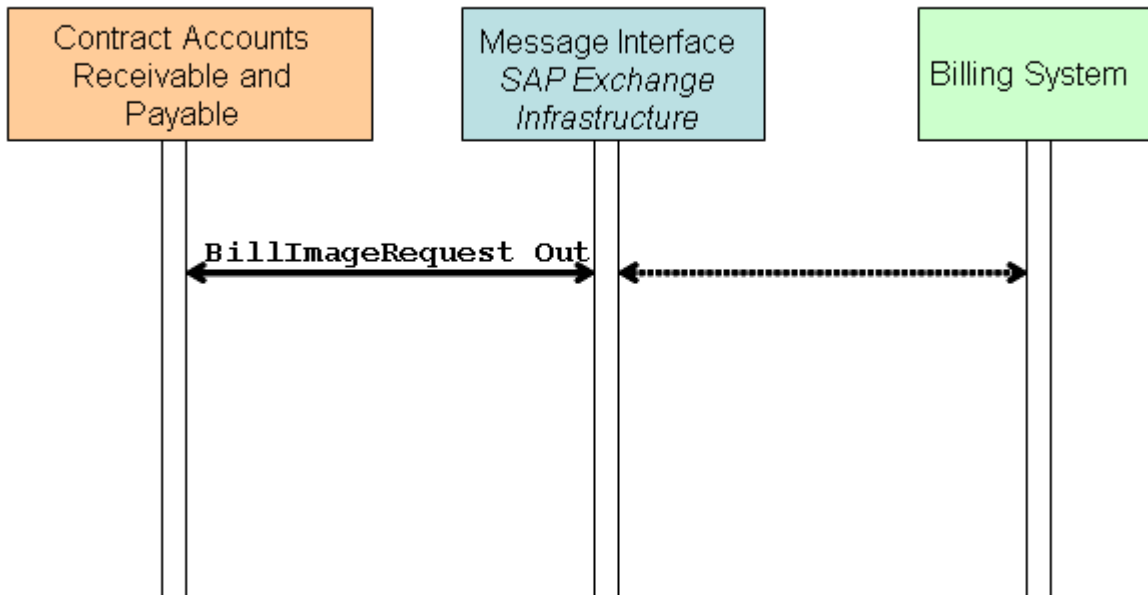
Message Interface for Invoice Archive

Use

The query of data from the invoice archive is realized by a synchronous message interface.

Structure

Message interface for external archive connection of invoices



Connect the interface `BillImageRequest_Out` (FI-CA) with a customer-specific synchronous interface (inbound) of the billing system.

SAP does not deliver mapping. You have to create the mapping in the customer namespace.

The call of the interface is encapsulated by the FI-CA module `FKK_XI_BILL_IMAGE`. The calling application defines the format in which the billing system is to return the archive data (for example, HTML, PDF, URL, XML). The billing system called must be able to provide the data in the relevant format. You can use the module in the following events:

- 1231Biller Direct - Bill Detail Display
- 1127FI-CA Account Balance – Invoice Detail Display
- 2816FCC – Invoice Detail Display

To handle invoices from external systems you can also use the following FI-CA service modules:

- `FKK_XI_BILL_INVID2OPBEL` – Conversion of an invoice number to a document number
- `FKK_XI_BILL_OPBEL2INVID` – Conversion of a document number into the invoice number

In event 2480, you also have to define the field of table `DFKKKO` in which the external invoice number is to be saved.